

Dighi Industrial Area

- The Dighi Port Industrial Area is being developed over 30,000 Acres. 15,000 Acres will be developed in the first phase Roads, Lengths, Bridges and Slab Culverts of a total length of 280 kilometers is being developed
- A Dedicated Freight Corridor connecting NCR-Delhi region to JNPT and Dighi Port with a Length of 1,483 km between Delhi and Mumbai aimed at developing Industrial Nodes across 6 states in India.
- Dighi Port Industrial Area is connected to Delhi-Mumbai Industrial corridor. It Aims to become a hub industrial activity in the country and a beacon of port led development



Education Institutes

Schools	6018
General Colleges	266
Technical Colleges	321



Skill Centers

Industrial Training Institutes (ITIs) /Industrial Training Centers (ITCs)	20
---	----



Healthcare Centers

Sub Center	288
PHCs	52
CHCS	8
District Hospital	1



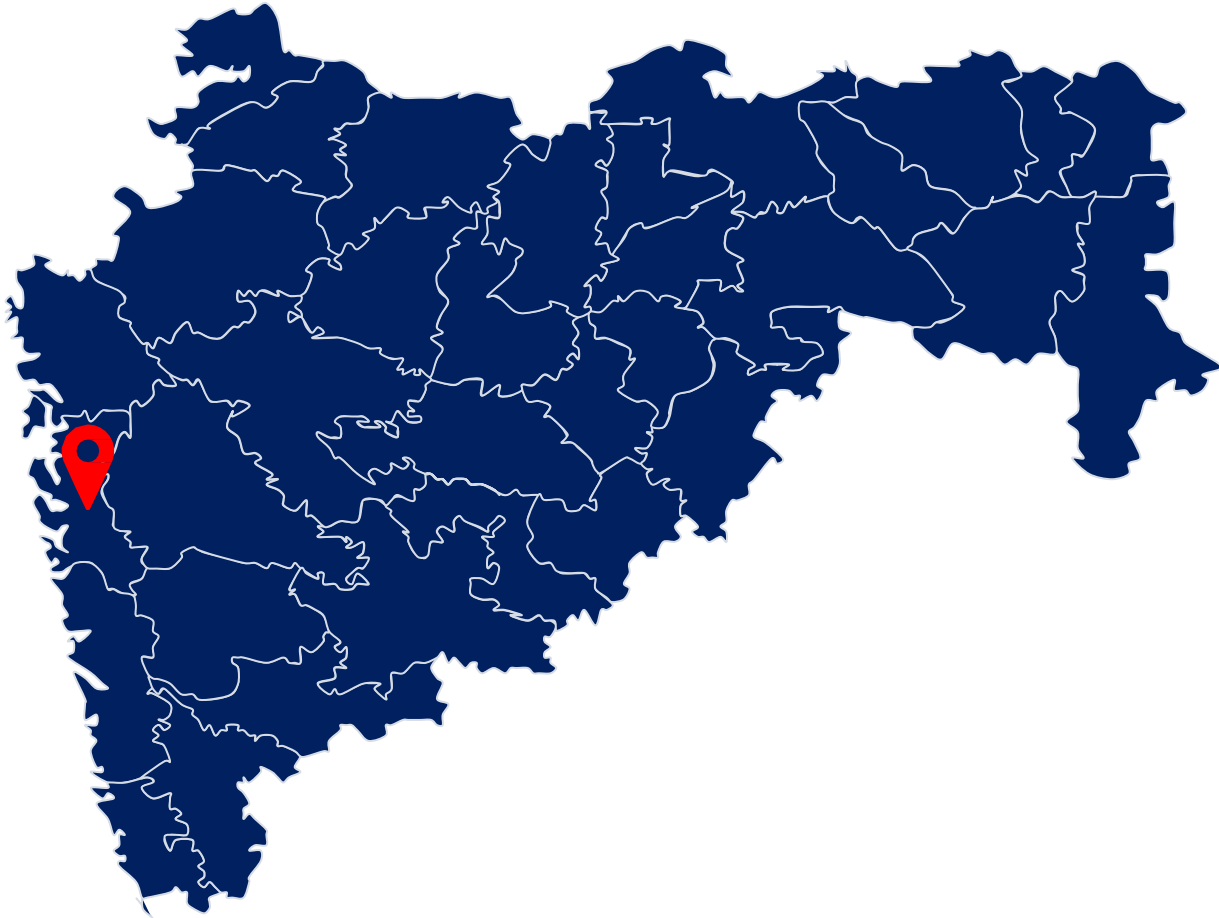
Alkyl Amines Chemicals



Asahi India Glass Ltd.



Dighi Industrial Area



 Dighi Industrial Area



Air Connectivity

Navi-Mumbai Airport (Proposed)	100 Kms
Mumbai Airport	130 Kms
Pune Airport	150 Kms



Road Connectivity

Mangaon	~0 Kms
Navi Mumbai	~100 Kms
Mumbai	~130 Kms



Port Connectivity

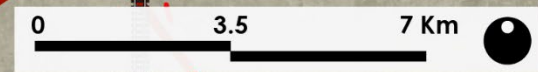
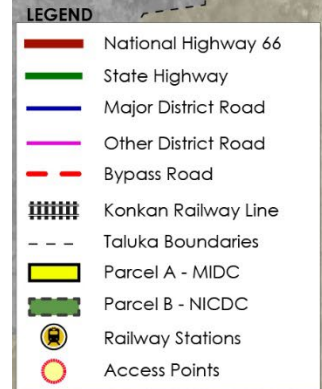
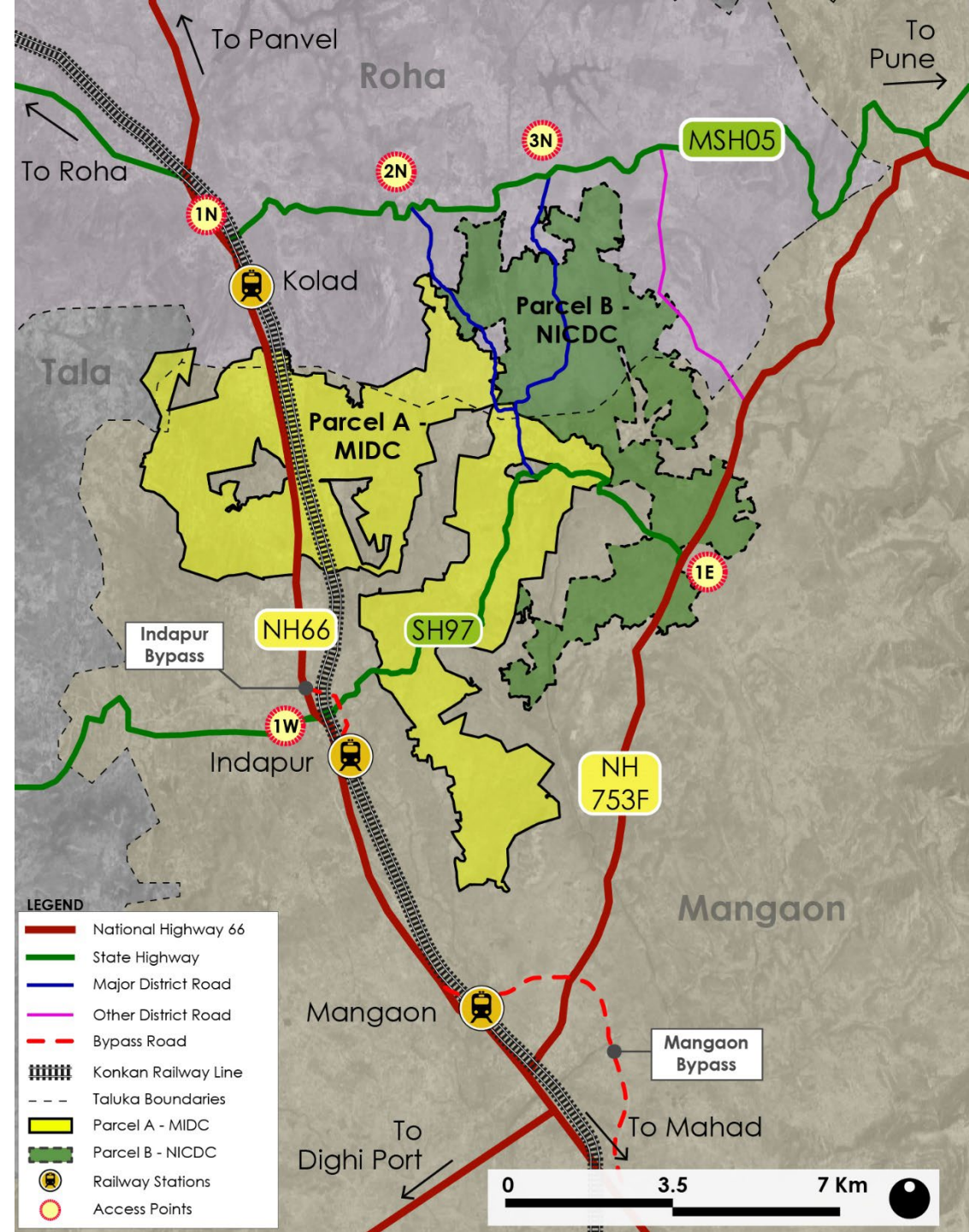
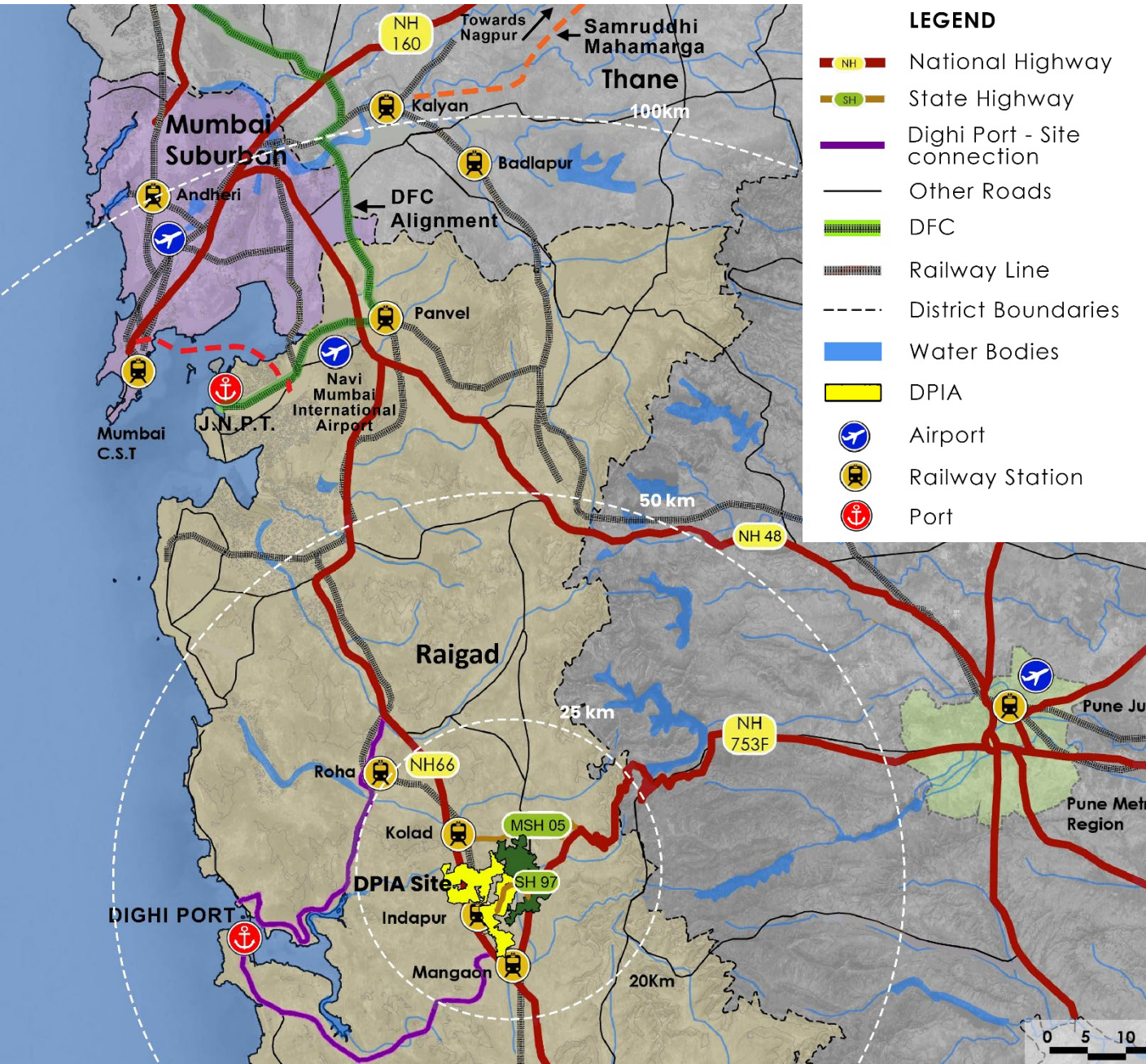
Dighi Port	50 kms
JNPT	90 kms
Mumbai Port Trust	125 kms



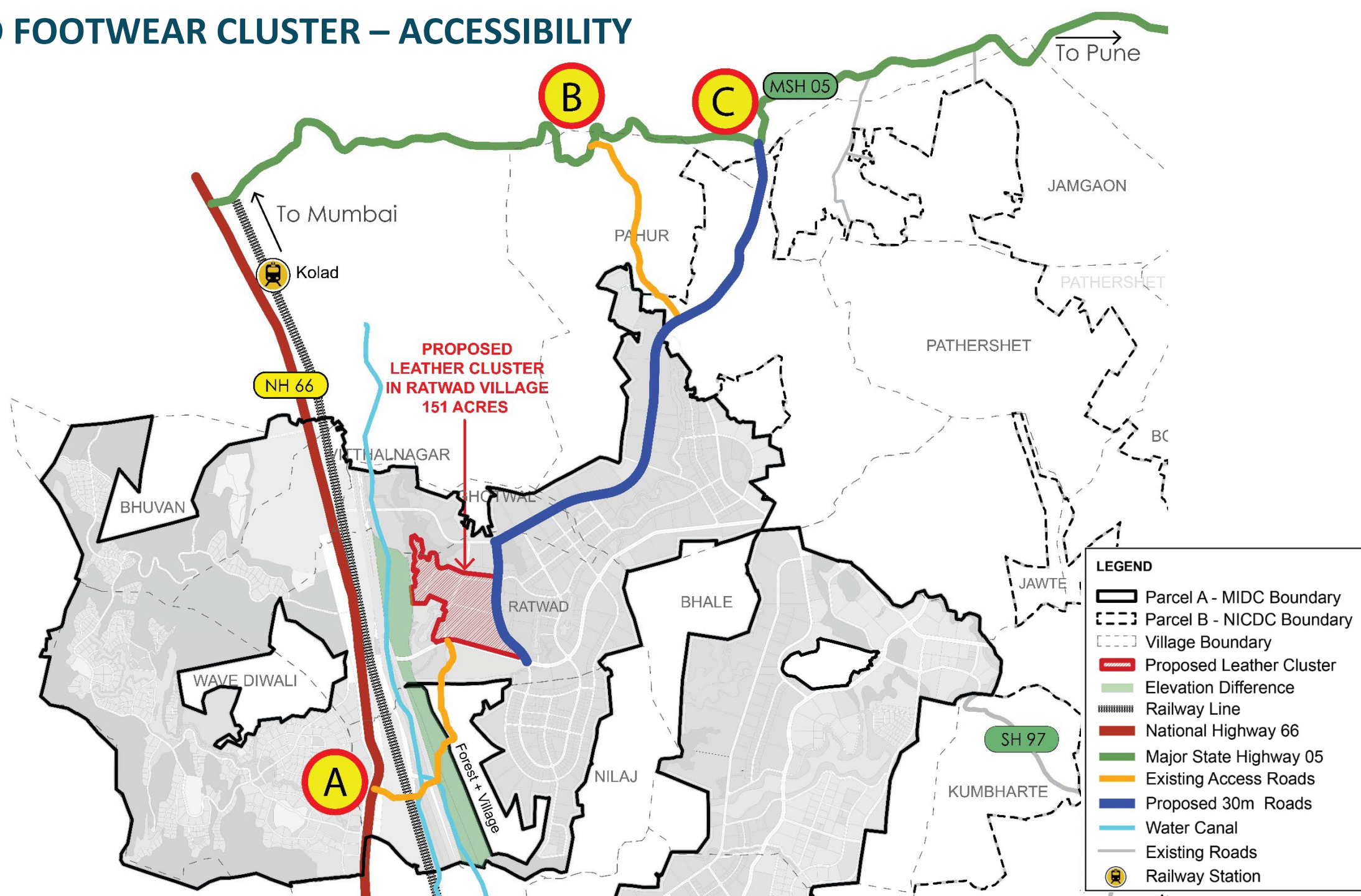
Railway Connectivity

Kolad	5 km
Indapur, Mangaon	10 km

REGIONAL CONNECTIVITY



PROPOSED FOOTWEAR CLUSTER – ACCESSIBILITY



PROPOSED FOOTWEAR CLUSTER – ACCESSIBILITY

